



LUMI PLEXEL

Non-Surgical Skin Rejuvenation



COMBINING MICRONEEDLING & RADIO FREQUENCY

SKIN REJUVENATION

Lumi Plexel is a minimally invasive non-surgical treatment approach that combines Microneedling and radio frequency, utilizing radiofrequency energy to effectively rebuild and revitalize the skin. All whilst leaving the outer layer of the skin intact.

RESULTS DRIVEN

Lumi Plexel greatly reduces fine lines, wrinkles, and lifts skin, whilst promoting collagen and elastin production. A Lumi Plexel treatment is so versatile that it can be used to target a number of concerns on both the face and body.

TECHNOLOGY EXCLUSIVE TO LUMI SKN

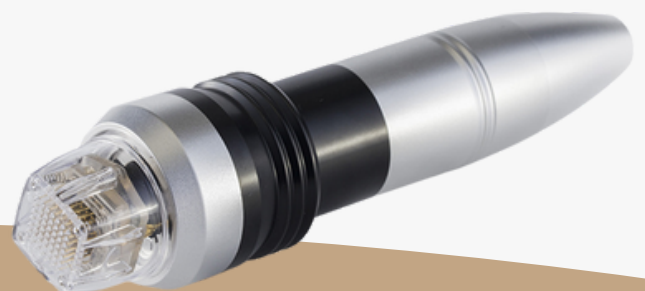
With traditional devices supporting one handpiece, Therapists have even more ways to customize treatments with Lumi PLEXELS combination of three handpieces – DeepRF, ExactRF & Cool Contact. The DeepRF handpiece boasts 25-49 needles and ExactRF 64 needles to treat new areas of the face and body. The cool contact handpiece uses cooling technology to reduce client discomfort. Making the Lumi Plexel a first of its kind.





WHY CHOOSE LUMIPILEXEL

- ✓ Profitable Treatments with low consumable costs.
- ✓ Robotic precision delivery and unique Sub-Pulse Technology to increase client comfort without sacrificing power.
- ✓ Gold Plated Needles to minimise side effects from metal allergies.
- ✓ Accurate , controlled delivery.
- ✓ Precise Depth Control 0.5mm-3.0mm.
- ✓ Treat a multitude of client concerns on both face and body.
- ✓ Contact Cool Handpiece to ensure maximum client comfort.
- ✓ Fast treatment times.
- ✓ User Friendly Interface,
- ✓ 3 different sizes of needles heads: 25 , 49 and 64 needle configurations.



TREATMENT CONSUMABLES INCLUDED

We know you'll want to get your LumiPlexel working as soon as it arrives.

All LumiSKN devices are shipped 'ready to go' and include all the consumables you'll need to expand your treatment menu and impress your clients.

- ✓ 4 Treatment Handpieces
- ✓ Additional internal filter
- ✓ 30 Needle Heads

**FINANCE
OPTIONS
AVAILABLE**

ONGOING SERVING & SUPPORT

Our Lumi Plexel packages are more than just a skin rejuvenation device. We understand that you'll need ongoing support to get the most from your clinic's investment.

Our commitment to providing the support services you need stands our team head and shoulders above our competitors:

- ✓ Full, ongoing, telephone treatment support services with our experienced trainers
- ✓ 2-year warranty
- ✓ 1-year servicing support
- ✓ Marketing package including flyers, pricelists, point of sale and digital files.
- ✓ Consultation packs, consent forms and customer record cards.



LUMI PLEXEL

Non-Surgical Skin Rejuvenation

GAIN THE COMPETITIVE EDGE

LumiSKN has a solid reputation for providing the latest technology to beauty clinics and salons and Lumi Plexel is the latest in our innovative offerings. With low running costs and long-lasting consumables, you can expand your treatment menu in an affordable way to yield high returns.

WHAT RETURNS CAN I EXPECT?

Earn over £136,500 per year based on 3 treatments of Lumi Plexel.

| LUMI PLEXEL | Calculated Earnings Per Week | Calculated Earnings Per month | Calculated Earnings Per Year |
|---------------|------------------------------|-------------------------------|------------------------------|
| 30 Min (£175) | £2,625 | £10,500 | £136,500 |
| 60 Min (£350) | £5,250 | £21,000 | £273,000 |

Calculations based on 3 treatments carried out per day, 5 days, 1 month (4 weeks) and over 52 working weeks.

IN-DEPTH TRAINING

Training is a critical component of the LumiSKN service. We want you and your team to feel confident and assured when operating your Lumi Plexel device. We provide fully accredited training for up to four delegates.

SPECIFICATIONS

| | | | |
|-----------------|------------|-------------------|--------------|
| Frequency | 2MHz | Touch Screen Size | 10.4 inch |
| Maximum Energy | 50W | Net Weight | 20kg |
| Needle Depth | 0.5 - 3 mm | Machine Height | 1100mm |
| Cooling Contact | -10°C | Machine Depth | 280mm |
| Radio Frequency | 2MHz | Power | AC/100-240 V |